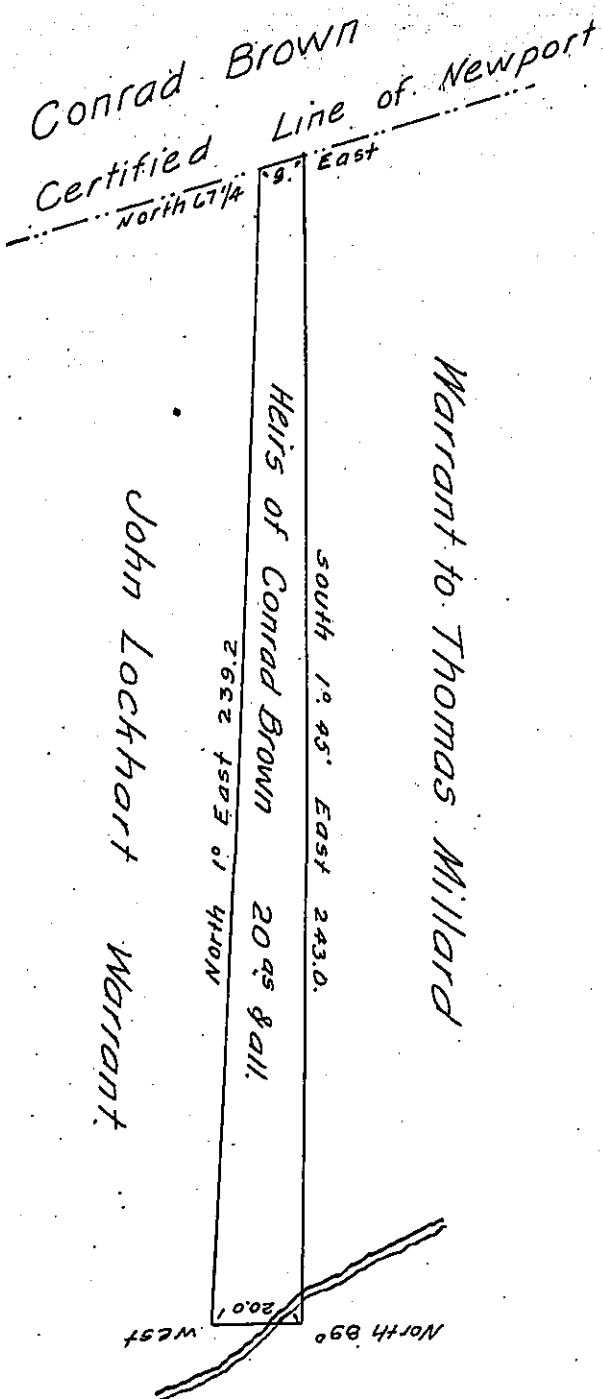


FORM NO 1.



Draft of a tract of unimproved Land Situated in the Township of Dorrance Luzerne County Pa. Containing Twenty acres and allowance of six per cent for Roads. Surveyed the above tract of land to the Heirs of Conrad Brown dec'd on the third day of December 1867 in persuance of a warrant granted to Said Conrad Brown dated the 11 day of May 1860.

Hon. J. M. Campell

John Sturdevant

S. G.

Surveyor for Luzerne County

Wilkes Barre February 1. 1876

I do hereby Certify that the above is a true Copy of the original remaining on file in this office.

P. B. Reynolds

Surveyor for Luzerne County

IN TESTIMONY that the above is a copy of the original remaining on file in the Department of Internal Affairs of Pennsylvania, made conformably to an Act of Assembly approved the 16th day of February, 1833, I have hereunto set my Hand and caused the Seal of said Department to be affixed at Harrisburg, this tenth day of January 1903.

Henry Horck
Secretary of Internal Affairs.